

Monthly Weather Summary in Thailand

January 2013

High pressure area from China occasionally extended its ridge to cover upper Thailand particularly during middle period. Resulted in cool weather almost the month and temperature was relatively decreased in several areas. Besides, the weak northeast monsoon mostly predominated over Thailand coupled with the southeasterly and southerly winds prevailing over central and eastern parts on few days. Moreover, the westerly trough moved through the northern, central and upper northeastern parts during late month. It brought unseasonal rain to upper Thailand and temperature decreased in upper northern part during the mentioned period. Abundant rainfall intermittently occurred in southern Thailand nearly the whole month. Mean temperatures of January were above normal in general.

Monthly rainfall total over Thailand was 129% above normal and monthly rainfall was higher than normal in all parts i.e. northern part 27.0 mm (587%), northeastern part 4.0 mm (83%), central 16.3 mm (243%), eastern part 54.0 mm (335%), southern part (east coast) 15.0 mm (25%) and southern part (west coast) 19.7 mm (75%).

1–8 January: The active high pressure area from China extended to cover upper Thailand then weakened during late period. In addition the northeast monsoon prevailed over southern part, the Gulf of Thailand and intensified during the second half of the period. These conditions brought cool weather in most areas of upper Thailand and cold in several areas in northern and northeastern parts. The minimum temperature of the period was 12.6 °C, at Amphoe Umphang in Tak province on January 8. In the Mountainous areas and mountain tops, temperature climbed down to 3.5 °C at Doi Intanon in Chiang Mai province on January 3. For rainfall, no rainfall was reported in upper Thailand while southern part turned scattered rain from Chumphon province southward and heavy to very heavy rainfall in some areas mainly during the first half of the period. The heaviest daily rainfall of 96.3 mm was measured at Walailak University in Nakhon Si Thammarat province on January 4.

9–18 January: Temperature was relatively decreased especially in northern part where experienced cold weather in the upper portion and in some areas over upper northeastern, central parts while the other region remained cool weather. The minimum temperature of the period was 8.2 °C at Amphoe Umphang in Tak province on January 11 and dropped to 2.5 °C in the area of mountain top at Doi Angkhang, Amphoe Fang in Chiang Mai province on January 13. Affected by the southeasterly and southerly winds over central and eastern parts, it became isolated slight rain in central and eastern parts on January 12-13. The highest daily rainfall was 7.1 mm at Amphoe Muang in Rayong province on January 11. Southern Thailand obtained isolated to widely scattered rain and heavy rainfall in some places mainly during the second half of the period. The heaviest daily rainfall of 53.2 mm was measured at Amphoe Muang in Krabi province on January 11.

19–31 January: The moderate high pressure area covered upper Thailand during the first half of the period then another rather active high pressure area extended its ridge to cover the mentioned area. These caused cool and cold weather in northern part especially during late period when upper portion experienced very cold in some places. Cool weather persisted in northeastern part with cold in several areas mainly in the first half of the period. Cool weather was also presented across central, eastern and upper southern parts during the same period. The lowest temperature 7.7 °C was measured at Amphoe Mae Sariang in Mea Hong Son province on January 27 and 2.5 °C at Doi Angkhang, Amphoe Fang in Chiang Mai province on January 27 and 28. Moreover during late period, upper Thailand received widely scattered to scattered rain with heavy to very heavy rainfall in some places due to the influence of westerly trough. The maximum daily rainfall was 102.4 mm at Amphoe Khlong Yai in Trad province on January 29. Southern Thailand obtained isolated to widely scattered rain and heavy rainfall in some areas except for the second half of the period, there was no rain along the west coast. The heaviest daily rainfall was 87.6 mm at Amphoe Muang in Chumphon province on January 23.

Note : Rainfall, temperatures and natural disasters in this report were updated up to February 14, 2013.

Climatological Center
Meteorological Development Bureau
Meteorological Department

Monthly Current Report
Rainfall and Accumulative Rainfall
January 2013

Northern Thailand

Station	Temperature (°c)		Rainfall (mm)		Accumulative rainfall (mm) Since 1 January	
	Mean	Above or below normal	Actual	Above or below normal	Actual	Above or below normal
Chiang Rai	21.1	1.4	21.8	14.3	21.8	14.3
Mae Hong Son	20.7	0.1	39.1	32.7	39.1	32.7
Phayao	21.6	1.0	46.3	40.6	46.3	40.6
Chiang Mai	23.2	1.7	25.0	20.8	25.0	20.8
Tha Wang Pha	21.9	1.3	49.0	42.0	49.0	42.0
Nan	22.9	1.5	38.5	34.1	38.5	34.1
Lamphun	22.4	0.7	5.3	2.5	5.3	2.5
Lampang	23.2	1.0	28.9	26.1	28.9	26.1
Mae Sariang	21.0	0.6	2.4	0.9	2.4	0.9
Phrae	23.2	0.9	62.0	56.2	62.0	56.2
Uttaradit	25.0	0.9	7.9	2.4	7.9	2.4
Bhumibol Dam	23.9	0.2	16.9	14.3	16.9	14.3
Tak	24.8	0.7	37.7	35.6	37.7	35.6
Mae Sot	23.5	1.1	0.6	-1.1	0.6	-1.1
Umphang	20.9	0.7	27.5	20.7	27.5	20.7
Phitsanulok	25.4	0.6	27.7	23.8	27.7	23.8
Lom Sak	25.1	0.8	27.7	22.9	27.7	22.9
Phetchabun	25.2	1.1	31.5	25.9	31.5	25.9
Wichian Buri	25.7	0.4	128.9	121.2	128.9	121.2
Kamphaeng Phet	25.1	0.3	6.4	4.1	6.4	4.1
Over the area	23.3	0.9	31.6	27.0 587%	31.6	27.0 587%

Northeastern Thailand

Station	Temperature (°c)		Rainfall (mm)		Accumulative rainfall (mm) Since 1 January	
	Mean	Above or below normal	Actual	Above or below normal	Actual	Above or below normal
Nong Khai	23.4	0.9	28.6	20.3	28.6	20.3
Loei	22.9	1.2	11.0	4.8	11.0	4.8
Udon Thani	23.2	0.4	2.6	-3.7	2.6	-3.7
Nakhon Phanom	22.9	0.7	0.5	-2.5	0.5	-2.5
Sakon Nakhon	22.6	0.5	0.5	-4.2	0.5	-4.2
Mukdahan	23.3	0.7	3.9	0.2	3.9	0.2
Khon Kaen	24.0	0.6	7.4	3.4	7.4	3.4
Kosum Phisai	24.1	0.4	4.1	0.6	4.1	0.6
Roi Et	23.8	0.5	17.5	13.9	17.5	13.9
Chaiyaphum	24.9	0.7	46.9	42.4	46.9	42.4
Ubon Ratchathani	24.5	0.3	0.7	-1.3	0.7	-1.3
Tha Tum	24.7	0.7	0.0	-5.1	0.0	-5.1
Surin	25.1	1.0	3.5	-2.1	3.5	-2.1
Nakhon Ratchasima	24.9	0.6	4.1	-4.1	4.1	-4.1
Chok Chai	24.9	0.5	9.3	5.3	9.3	5.3
Nang Rong	24.3	0.0	0.0	-4.7	0.0	-4.7
Over the area	24.0	0.6	8.8	4.0 83%	8.8	4.0 83%

- NOTES :
- 1) Mean temperature is the average of daily dry-bulb temperature
 - 2) "T" is trace, rainfall amount less than 0.1 mm.
 - 3) "blank" is incomplete data.
 - 4) Temperature and rainfall are preliminary data.

Monthly Current Report
Rainfall and Accumulative Rainfall
January 2013

Central Thailand

Station	Temperature (°c)		Rainfall (mm)		Accumulative rainfall (mm) Since 1 January	
	Mean	Above or below normal	Actual	Above or below normal	Actual	Above or below normal
Nakhon Sawan	25.9	0.4	7.6	3.3	7.6	3.3
Bua Chum	25.5	0.5	40.7	34.0	40.7	34.0
Lop Buri	26.8	0.4	9.8	4.1	9.8	4.1
Suphan Buri	26.4	0.7	0.0	-3.7	0.0	-3.7
Thong Pha Phum	25.2	0.4	11.0	5.6	11.0	5.6
Kanchanaburi	26.8	0.8	2.0	-1.3	2.0	-1.3
Bangkok Airport	27.9	0.9	71.8	60.4	71.8	60.4
Bangkok Metropolis	27.9	0.9	41.2	27.9	41.2	27.9
Over the area	26.6	0.7	23.0	16.3 243%	23.0	16.3 243%

Eastern Thailand

Station	Temperature (°c)		Rainfall (mm)		Accumulative rainfall (mm) Since 1 January	
	Mean	Above or below normal	Actual	Above or below normal	Actual	Above or below normal
Prachin Buri	27.4	0.6	0.9	-6.8	0.9	-6.8
Kabin Buri	26.1	-0.2	0.0	-9.0	0.0	-9.0
Aranyaprathet	27.2	1.1	0.1	-5.3	0.1	-5.3
Chon Buri	27.7	0.8	38.2	28.3	38.2	28.3
Ko Sichang	27.1	0.6	139.6	128.7	139.6	128.7
Pattaya	26.9	0.6	24.4	8.8	24.4	8.8
Sattahip	26.3	0.1	167.9	142.3	167.9	142.3
Rayong	26.6	0.4	116.4	95.7	116.4	95.7
Chanthaburi	27.1	0.7	66.8	48.1	66.8	48.1
Khlong Yai	27.2	0.7	147.1	109.9	147.1	109.9
Over the area	27.0	0.6	70.1	54.0 335%	70.1	54.0 335%

- NOTES :
- 1) Mean temperature is the average of daily dry-bulb temperature
 - 2) "T" is trace, rainfall amount less than 0.1 mm.
 - 3) "blank" is incomplete data.
 - 4) Temperature and rainfall are preliminary data.

Monthly Current Report
Rainfall and Accumulative Rainfall
January 2013

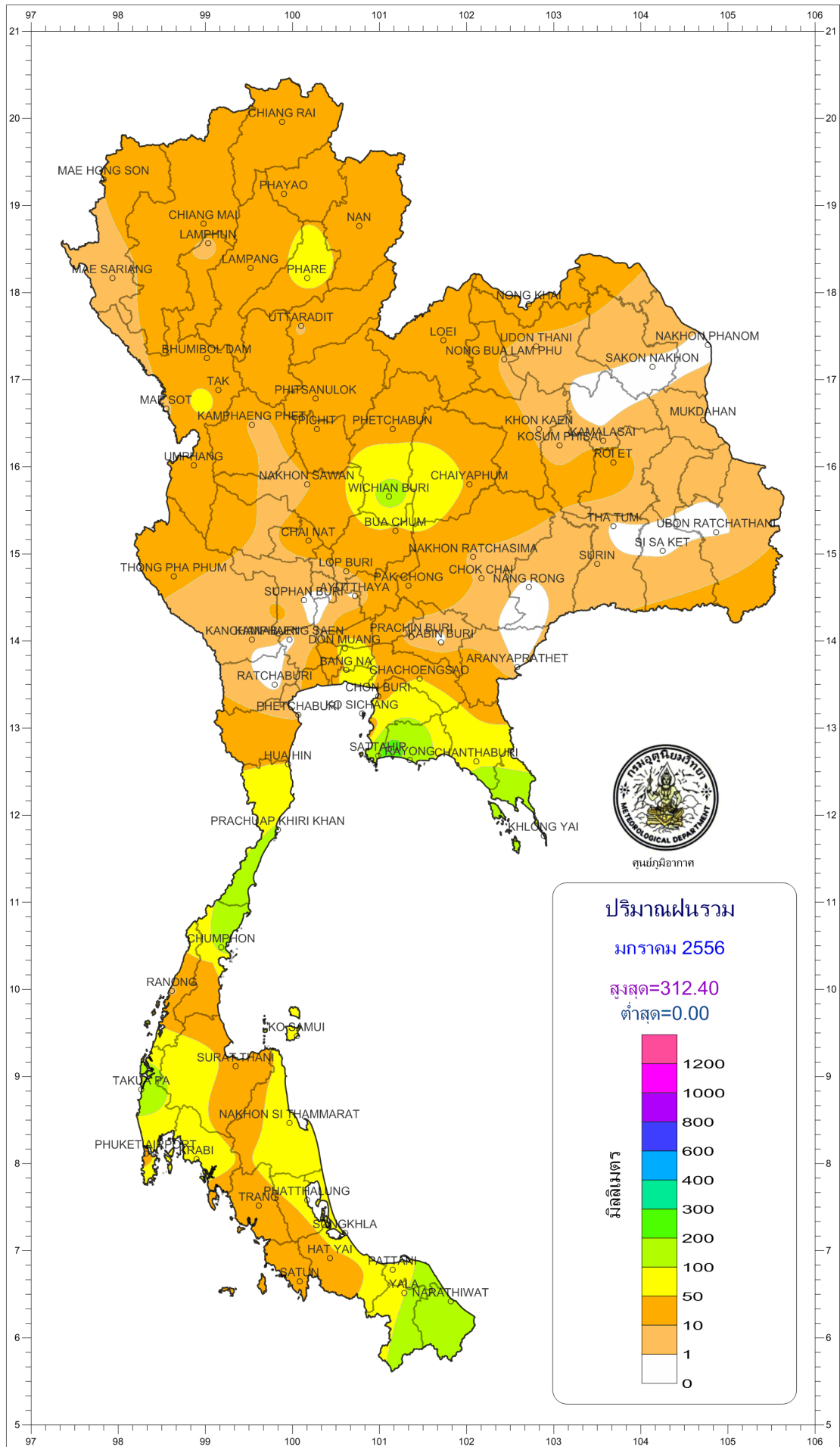
Southern Thailand, east coast

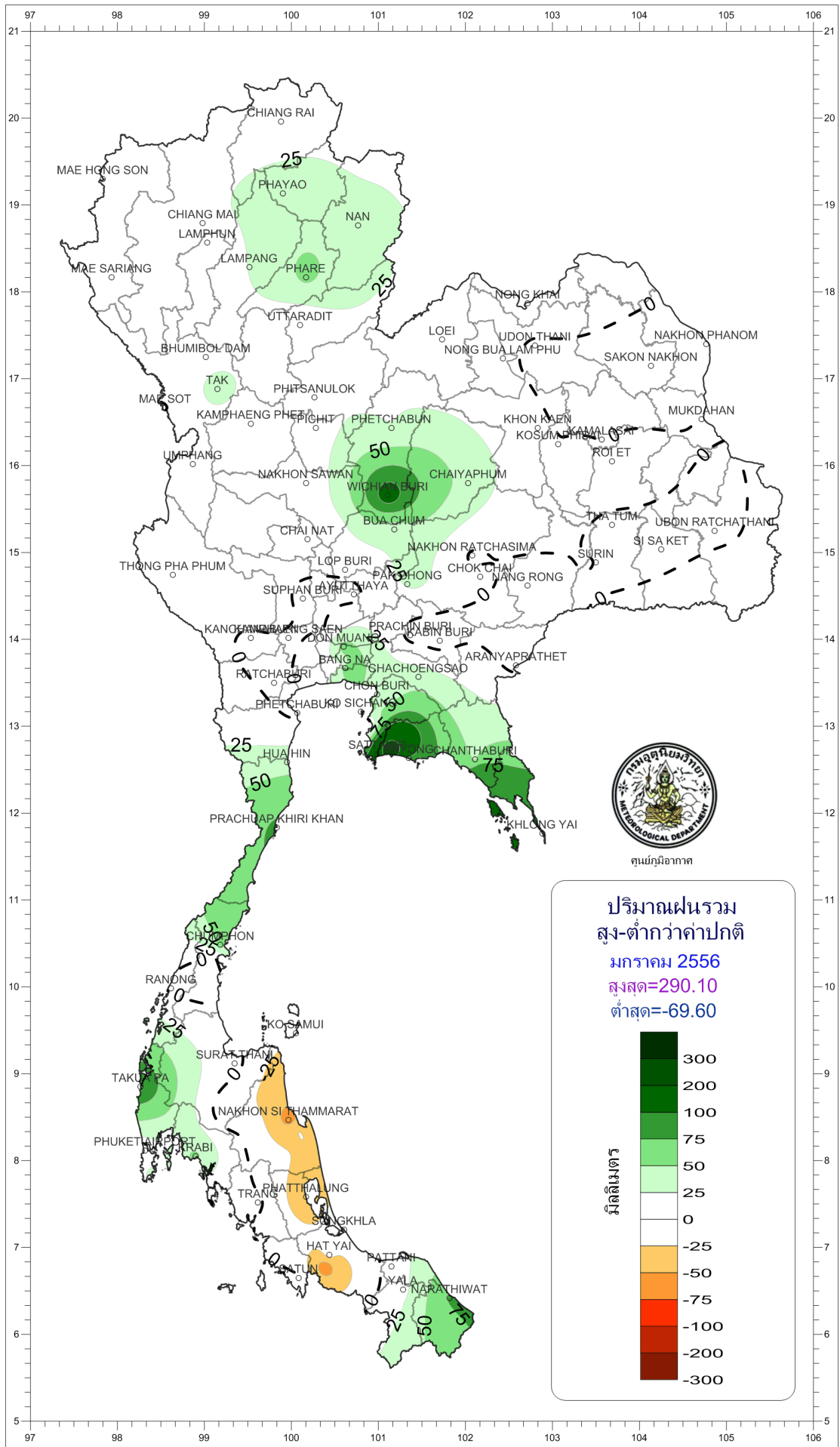
Station	Temperature (°c)		Rainfall (mm)		Accumulative rainfall (mm) Since 1 January	
	Mean	Above or below normal	Actual	Above or below normal	Actual	Above or below normal
Phetchaburi	26.6	0.8	6.8	-4.6	6.8	-4.6
Hua Hin	26.8	0.8	51.4	39.6	51.4	39.6
Prachuap Khiri Khan	26.1	0.7	104.1	79.7	104.1	79.7
Chumphon	26.7	1.0	118.3	58.9	118.3	58.9
Surat Thani	26.5	0.9	47.2	10.4	47.2	10.4
Ko Samui	27.7	0.9	62.2	-24.0	62.2	-24.0
Nakhon Si Thammarat	26.5	0.5	84.7	-60.7	84.7	-60.7
Songkhla	27.4	0.3	68.4	-6.4	68.4	-6.4
Hat Yai Airport	26.6	0.6	39.0	-14.8	39.0	-14.8
Pattani Airport	26.5	0.5	60.3	9.4	60.3	9.4
Narathiwat	26.1	0.0	179.1	77.5	179.1	77.5
Over the area	26.7	0.7	74.7	15.0 25%	74.7	15.0 25%

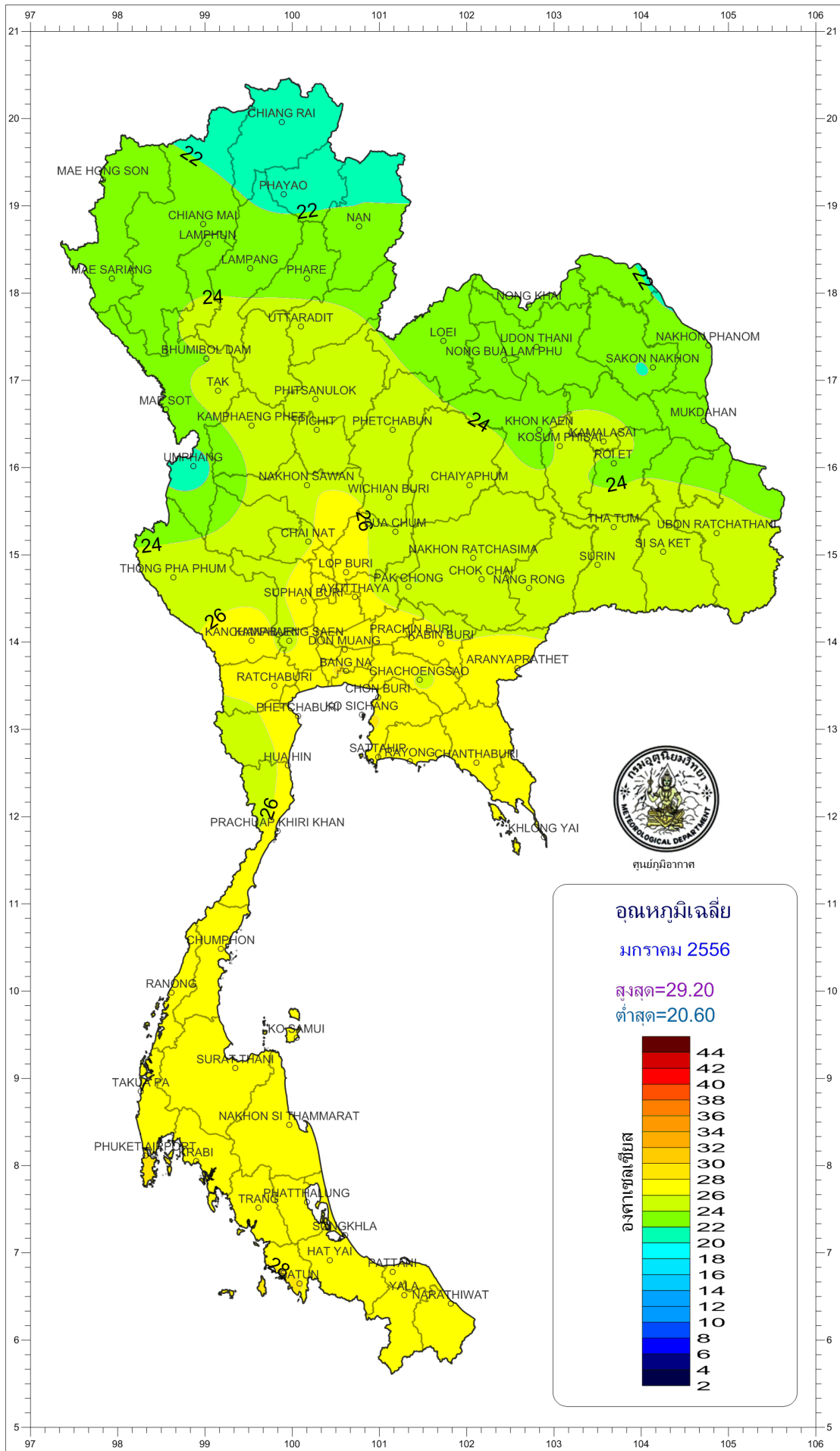
Southern Thailand, west coast

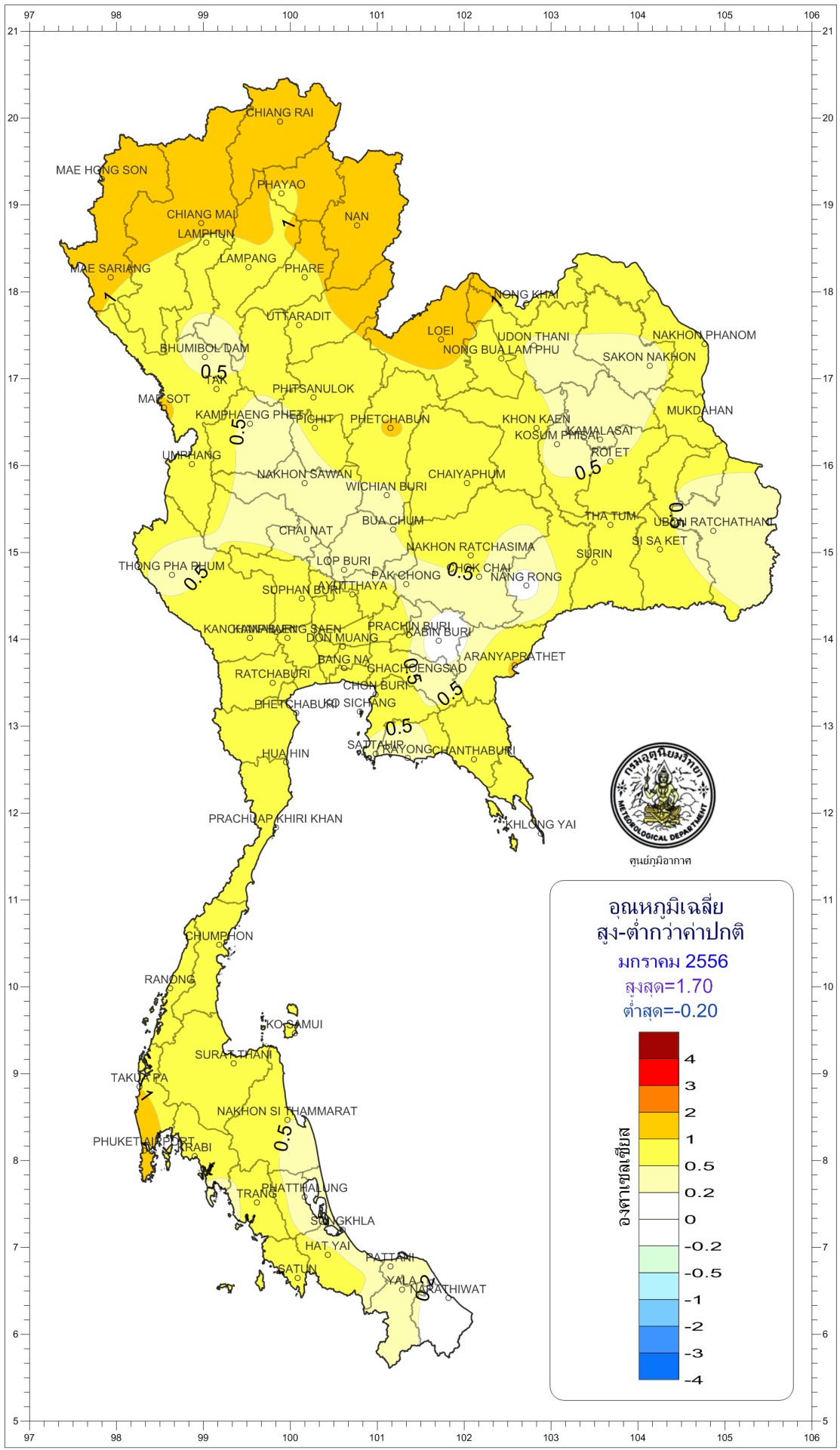
Station	Temperature (°c)		Rainfall (mm)		Accumulative rainfall (mm) Since 1 January	
	Mean	Above or below normal	Actual	Above or below normal	Actual	Above or below normal
Ranong	27.4	0.7	6.2	-3.8	6.2	-3.8
Takua Pa	27.4	1.0	141.1	101.7	141.1	101.7
Phuket	29.2	1.1	58.8	28.5	58.8	28.5
Phuket Airport	28.1	1.1	40.1	3.9	40.1	3.9
Ko Lanta	28.0	0.4	14.2	-0.7	14.2	-0.7
Trang Airport	27.4	0.6	36.8	4.3	36.8	4.3
Satun	28.1	0.6	25.6	4.4	25.6	4.4
Over the area	27.9	0.7	46.1	19.7 75%	46.1	19.7 75%

- NOTES :
- 1) Mean temperature is the average of daily dry-bulb temperature
 - 2) "T" is trace, rainfall amount less than 0.1 mm.
 - 3) "blank" is incomplete data.
 - 4) Temperature and rainfall are preliminary data.









ศูนย์ภูมิอากาศ